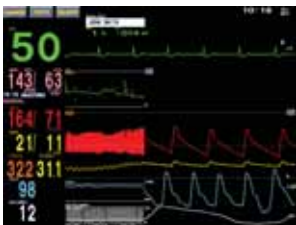


parameter measurement

User-friendly

★ Easy-to-view display

Easy to view crisp TFT color LCD screen with 5 or 6 traces display. One ECG waveform and numeric data are always displayed even on review windows.



★ Touch screen

A touch screen allows easy and intuitive operation. Just touch the place on the screen you want to see or change. A Home key takes you to the main screen from any screen.



★ Short trend

You can view 30-minute short trend with real time waveform, and change the length of the short trend display with your finger.

★ Enlarged numeric display

An enlarged numeric display lets you see the patient condition from a distance.



★ Free-writing patient name

You can directly write the patient name on screen with your finger or a touch pen. Any characters and figures can be displayed. (not available on the network)



Life Scope

Bedside Monitor BSM-4100J/K series

Powerful ECG management



Nihon Kohden Monitoring System Network

★ LS-NET (Life Scope Networking)

You can connect to Nihon Kohden central and bedside monitors using Ethernet and TCP/IP (LS-NET). (An optional QI-101P network card is required.)

you can transmit waveforms and parameter data to a Nihon Kohden telemetry central monitor or multi-patient receiver.

★ HL7 gateway

You can connect to HIS (Hospital Information System) and LS-NET using HL7 gateway. (An optional QP-982PK HL7 gateway software is required.)

★ Wireless Networking

By attaching an optional ZS-900PK transmitter (optional holder DI-490P required) to the monitor,

Major options

For full list of options and consumables, see the Technical Data separately available

Cart, KC-009P

Quick release lever and tiltable stand

Flash disk card, QM-421P

Adds 48-hour full disclosure ECG function and ST recall function

Battery, X060 (NKB-101)

About 1 hour monitoring for patient transport

Network card, QI-101P

Network printer card, QI-111P

Transmitter, ZS-900P

HL7 gateway software, QP-982PK

Multigas unit, AG-920RA/RK

CO₂ unit (sidestream), AG-400RA/RK

SpO₂ probe, BluPRO®

Reusable type (washable)



P225F finger

Disposable type



P203A adult finger
P203E child finger

P203C neonate instep
P203D infant finger or toe

CO₂ sensor cap-ONE



World's first mainstream CO₂ sensor for non-intubated patients



P907 for non-intubated patients



P905 for Quantitative method

V923 Disposable naso-oral adapter, for oxygen cannula adjustment, 30 pcs

R802 Airway adaptor, adult, 30 pcs
R803 Airway adaptor, child, 30 pcs

Model Suffixes

BSM-4101/4103/4111/4113 has the following suffixes:
J: 100 - 127 V AC operation K: 220 - 240 V AC operation

This brochure may be revised or replaced by Nihon Kohden at any time without notice.



NIHON KOHDEN CORPORATION
1-31-4 Nishiochiai, Shinjuku-ku, Tokyo 161-8560, Japan
Phone +81 (3) 5996-8036 Fax +81 (3) 5996-8100
www.nihonkohden.com

Fighting Disease with Electronics



MULTI connectors for flexible parameter measurement

MULTI connectors for flexible parameters

★ 3 or 2 MULTI connectors for flexible monitoring



The MULTI connector gives you high flexibility in the selection of parameters. When you plug the sensor cable into a MULTI connector, the monitor automatically detects the type of parameter and starts measuring.

Configured parameters:
ECG, respiration (impedance), NIBP, SpO₂

MULTI connector parameters:
blood pressure (3ch), temperature (2ch), cardiac output, CO₂ (mainstream), FIO₂, respiration (thermistor)

Site-oriented features

★ICU/CCU

Intensive monitoring

- 3 (BSM-4103/4113) or 2 (BSM-4101/4111) MULTI connectors allow high flexibility in parameters for each patient's unique condition
- User friendly and reliable alarm
- Powerful ECG management

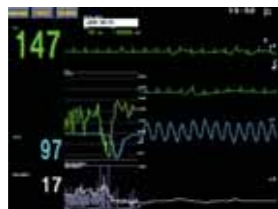


Long duration ECG waveform (7 traces, 56 seconds by cascade)

★NICU/PICU

Special consideration for neonates

- Special screens such as OCRG
- Various sensors, probes, and cuffs especially designed for neonatal monitoring



★Operation Room

Anesthetic gas measurement with AG-920R (option)

- Short warm-up time
 - Flexible sampling flow rate (70 mL/min to 200 mL/min)
 - Unique trendgraph
- Parameters:** CO₂, O₂, N₂O, anesthetic agents (Halothane, Isoflurane, Enflurane, Sevoflurane, Desflurane)



AG-920R mounted on KC-009P cart



Enhanced ECG monitoring

★ 12-lead ECG measurement and analysis

Simultaneous 12-lead ECG with 10 electrode measurement provides highly reliable ECG data. 12-lead ECG analysis is also provided.



12-lead ECG analysis report



Simultaneous 12-lead ECG



12-lead ECG analysis waveform



12-lead ECG analysis average waveform

★ Multi-template arrhythmia analysis

16 arrhythmia episodes (100 with optional flash disk card) of 8 seconds each can be stored using an editable multi-template arrhythmia analysis method which provides more reliable arrhythmia information.



★ Full disclosure

Up to 48 hours of ECG full disclosure with optional flash disk card is available.



★ ST recall

In order to easily review ST change, 500 files of ST can be recalled with optional flash disk card.



High performance

★ Interbed

You can view some information of other Life Scope series bedside monitors in the Ethernet network (LS-NET). The Interbed screen displays two waveforms, numeric data and alarms of each bed or 8 patients numeric data.



Note: Interbed display does not replace the central monitor's function.

★ Alarm history

You can review the numeric data of alarm occurrences from the alarm history table. You can also review the wave by jumping to the full disclosure screen from the alarm history table.



★ 3 alarm level indicator

A wide-viewing alarm indicator at the top of the monitor can be seen clearly from a distance. It lights in red or yellow to indicate the severity of the alarm.



★ Trendgraph/trend list

Up to 24 hours of trendgraphs of all parameters, and 120 sets of trend list data and 120 sets of NIBP list data can be stored and reviewed.



★ Data from external monitor (option)

With an optional interface, external equipment such as a ventilator or BIS monitor can be connected and data can be displayed with other parameters.

